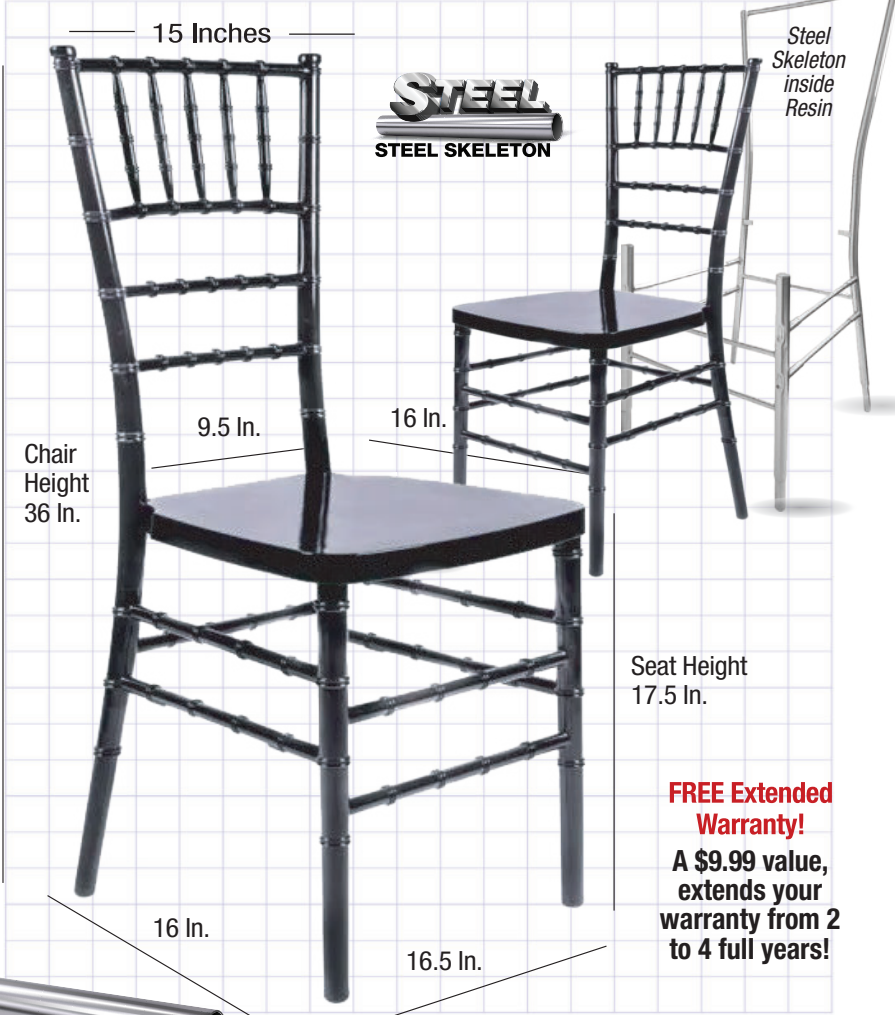


Mahogany Resin Steel Skeleton Chiavari Chair



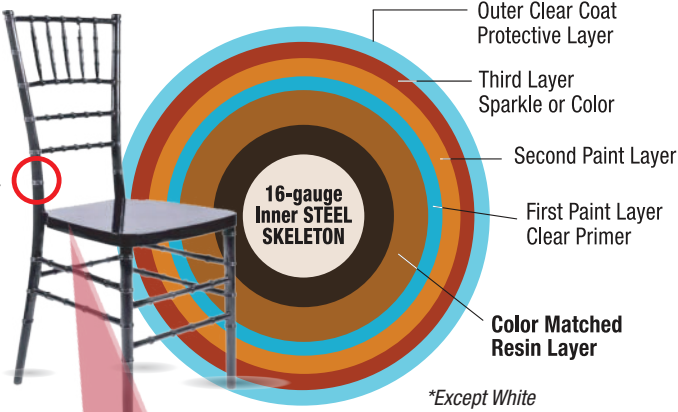
FREE Extended Warranty!
A \$9.99 value, extends your warranty from 2 to 4 full years!

Strongest Chiavari chair on the planet. Steel Reinforced. A gorgeous chair built like a tank!

Inside the Steel Skeleton:

This cross section shows an indestructible 16-gauge Steel Skeleton, "Best In Class Steel" wrapped in resin, finished with 4 coats of high-quality automotive paint protection.

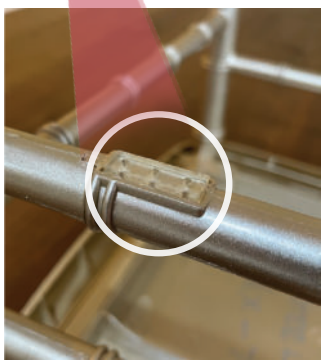
All the extra steps and care in manufacturing adds up to the most beautiful chair ever.



**Except White*

Safe Stacking with Our Protective Pad System

Avoid chipping, scratches or other damage during setup and take down.



Stack our chairs easily and safely.

Stack our chairs easily and safely. Our Steel Skeleton chairs include a series of "pads" on the bottom of the lower rung that protects against scratches and chipping when stacking. These pads also help our chairs stack straight.

Product Details

Color	Mahogany
Weight Capacity	800 Lbs
Limited Warranty	Extended from 2 to 4 Years
Commercial Grade	Yes
Material Category	Highest-Quality NEW Resin
Stack Capacity	10
Ships Assembled?	Yes
Arms?	No
Chair Weight	11.5 Lbs.
Overall Dimensions	16 x 16.5 x 36
Chair Height	36 in.
Seat Height	17.5 in.
Seat Width/Depth	15.5 in./16 in.
Units Per Pallet	48
Units Per Box	8
Country of Origin	China

Safety, Materials and Construction

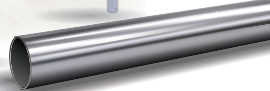
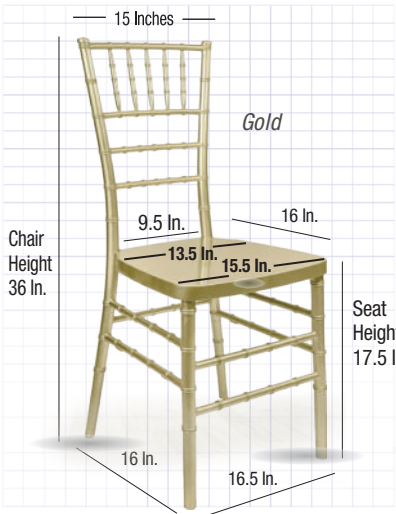
Safety Standards	Meets/exceeds ANSI/BIFMA standards
Frame Material	Highest quality steel and resin
Finish	Non-stick, anti-static
Automotive Paint	UV Treated Formula Exclusive!
Layers of Paint	4

What Makes Our Chair Different?

Reinforced Steel Skeleton	A 16-gauge steel skeleton is what makes our Chiavari chairs stronger and more resilient than other chairs.
Color-Matching Resin	Our inner resin core matches the paint color -- so even tough scratches are virtually invisible.
Clear Coat Primer	We apply a clear coat primer and allow it to cure, ensuring a hard and resilient foundation.
Automotive Paint	For that exquisite, glossy finish, we employ automotive paint, known for its durability and deep luster.*
Final Clear Coat	The finishing touch: An automotive shine! We apply a final clear coat to safeguard the integrity of the paint.

**Except White*

Our Resin Inner Steel Skeleton Chiavari Chair Collection



Strength, Durability and Beauty



Basic Resin Weight: 7 lbs.



ToughResin Weight: 10 lbs.



ToughWood Weight: 9 lbs.



Steel Skeleton Weight: 11.5 lbs.

Heavier, stronger. Our Steel Skeleton chair is our strongest because it is our heaviest. A truly heavy duty chair with up to 800 lb. weight capacity.

Protective Covers, Dollies and Carts



Stack our chairs easily and safely. Our Steel Skeleton chairs include a series of "pads" on the bottom of the lower rung that protects against scratches and chipping when stacking.



No slip, no hassle stacking. Chairs stay safe and protected.



An X-Ray View of Our Resin Steel Skeleton Chiavari Chair

INSIDE: **X-RAY VIEW** Of Our Steel Skeleton Chair

- ◀ An actual X-RAY View of Our Steel Skeleton Chair
- ◀ Actual X-Ray images show the steel inner skeleton beneath the beautiful resin finish. This is the strongest and most durable Chiavari chair available today.
- ◀ A 16-gauge steel skeleton is what makes our Chiavari chairs stronger and more resilient than other chairs

