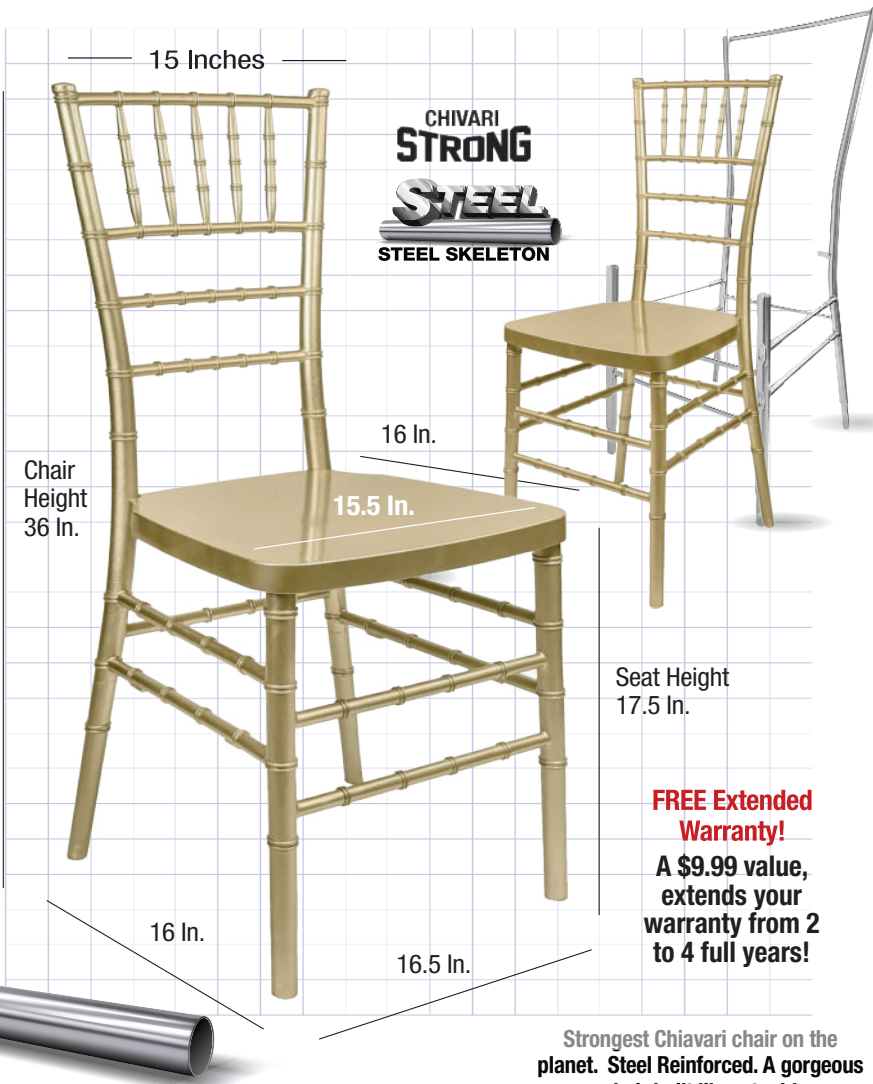


# Resin Inner Steel Skeleton Chiavari Chairs



**FREE Extended Warranty!**  
A \$9.99 value, extends your warranty from 2 to 4 full years!

**Strongest Chiavari chair on the planet. Steel Reinforced. A gorgeous chair built like a tank!**

## Product Details

Steel Skeleton	Yes
Weight Capacity	2000 lbs.
Limited Warranty	Extended from 2 to 4 Years
Commercial Grade	Yes
Material Category	Resin
Stack Capacity	10
Ships Assembled?	Yes
Arms?	No
Chair Weight	12 lbs.
Overall Dimensions	16 x 16.5 x 36 in.
Chair Height	36 in.
Seat Height	17.5 in.
Seat Width/Depth	15.5 in./16 in.
Units Per Pallet	48

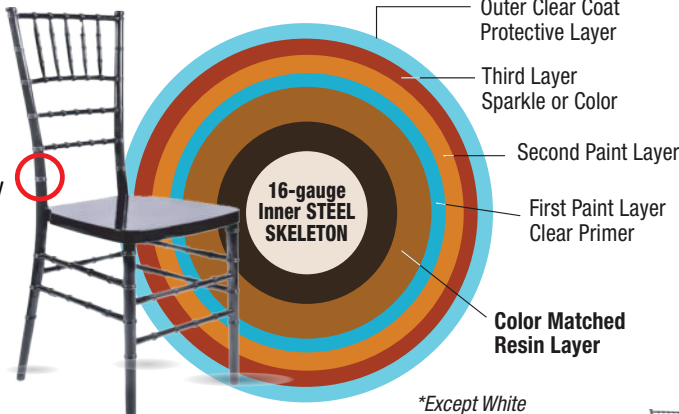
## Safety, Materials and Construction

Safety Standards	Meets or exceeds ANSI/BIFMA standards
Frame Material	Highest quality resin
Finish	Non-stick, anti-static
Automotive Paint	UV Treated Formula <b>Exclusive!</b>
Layers of Paint	4

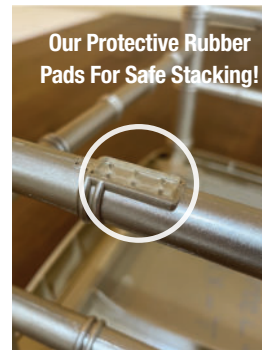
## Inside the Steel Skeleton:

This cross section shows an indestructible 16-gauge Steel Skeleton, "Best In Class Steel" wrapped in resin, finished with 4 coats of high-quality automotive paint protection.

All the extra steps and care in manufacturing adds up to the most beautiful chair ever.



*\*Except White*



**Our Protective Rubber Pads For Safe Stacking!**

*Stack our chairs easily and safely. Our Steel Skeleton chairs include a series of "pads" on the bottom of the lower rung that protect the chair when stacking to avoid chipping, scratches and other damage.*

*Others may use recycled resin to save money -- but that makes for a weaker chair. We use ONLY 100% NEW RESINS to insure that our chairs are the strongest, prettiest and most durable!*

## What Makes This Chair Different?

<b>Reinforced Steel Skeleton</b>	A 16-gauge steel skeleton is what makes our Chiavari chairs stronger and more resilient than other chairs.
<b>Color-Matching Resin</b>	Our inner resin core perfectly matches the paint color -- so even tough scratches are virtually invisible.
<b>Clear Coat Primer</b>	We apply a clear coat primer and allow it to cure, ensuring a hard and resilient foundation.
<b>Automotive Paint</b>	For that exquisite, glossy finish, we employ automotive paint, known for its durability and deep luster. <i>*Except White</i>



## An X-RAY VIEW of Our Chair

### The Inside

#### An actual X-RAY View of Our Steel Skeleton Chair >

Actual X-Ray images show the steel inner skeleton beneath the beautiful resin finish. This is the strongest and most durable Chiavari chair available today.

### The Outside

*We use ONLY NEW RESIN to craft our chairs. Others may use recycled resin.. It's cheaper, but recycled resin can **compromise a chair's strength.** And our chairs are **100% recyclable.*** >

## The World's STRONGEST Event Chair

- < A 16-gauge steel skeleton is what makes our Chiavari chairs stronger and more resilient than other chairs.
- < Our inner resin core matches the paint color -- so even tough scratches are virtually invisible.
- < We apply a clear coat primer and allow it to cure, ensuring a hard and resilient foundation.
- < For that exquisite, glossy finish, we employ automotive paint, known for its durability and deep luster.
- < The finishing touch: An automotive shine! We apply a final clear coat to safeguard the integrity of the paint.





# Resin Inner Steel Skeleton Chiavari Chairs



**FREE Extended Warranty!**  
Free Extended warranty -- a \$14.99 value, extends your warranty from 2 to 4 full years!



**CHIVARI**  
EXCLUSIVE PRODUCT  
Sparkling Gold Champagne



Classic Gold



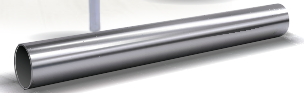
Mahogany



White



**CHIVARI**  
EXCLUSIVE PRODUCT  
Sparkling Silver Champagne



Fruitwood



Black



Silver



Sparkling Pearl White



Bullion Gold



Chestnut



Hunter Green



Fruitwood Woodgrain



White Distressed with Brushed Wood Look



Sparkling Rose Gold



Natural



Metallic Silver Onyx



ColorCore™



Deep Blue Sea ColorCore

Turquoise Blue ColorCore



Pink ColorCore



Champagne Gold WoodGrain